

Barkham Fields



We stand with

**UKRAINE**

**BARKHAM &  
ARBORFIELD GREEN**

# *Village* **INFO**

**July/August 2022**

# COUNCILLOR VACANCIES



**COME AND JOIN YOUR PARISH COUNCIL**

Contact our Parish Clerk Tel: 0118 976 2089 Email: [clerk@barkham-parishcouncil.org.uk](mailto:clerk@barkham-parishcouncil.org.uk)

## Contents

### Village INFO

Free to all residents in Barkham and most of Arborfield Green.

Circulation: 1500.

Published by Barkham Parish Council.

Vol. 5 Number 7 – July/August 2022

Pam Stubbs (BPC Chairman), Mike Bundred (Editor) and Ellen Tims (Parish Clerk).

*Village* INFO and the Parish web site aim to keep residents informed of issues and opportunities affecting the area.

See web site for the Council's meetings (every month except August) at the Arborfield Green Community Centre.

[www.barkham-parishcouncil.org.uk](http://www.barkham-parishcouncil.org.uk)

Contact Ellen Tims, Barkham Parish Clerk, for details of advertising and frequency.

**Tel: 0118 9762089**

Arborfield Green Community Centre, Sheerlands Road, Arborfield, RG2 9ND.

**Public Open Hours: Mon – Wed, 10am – 12pm**

**Office hours: Mon – Thurs, 10.00am – 2.00pm**

Design and layout by David Carr.

**Printed in England by Solopress.**

Inclusion of editorial or advertising material in *Village* INFO does not imply any endorsement or support by Barkham Parish Council (BPC). The Council also accepts no responsibility for views expressed by contributors or for any omission or error in production.

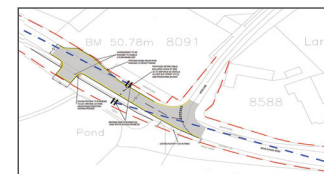
All editorial content ©copyright 2021 BPC except where otherwise indicated. Not to be reproduced without permission.

### Highlights



#### Local Plan Update Article

Where are we with the change of leadership at WBC?



#### Imminent closure of School Road Article

Find out about the closure of School Road



#### Tree Planting Article

Tree planting has taken place in Barkham



#### CIL Article

What is CIL and how is it used?





Hazebrouck Meadows under construction

# Local Plan Update

**With the change of council leadership following the recent local elections and so much being promised by those standing for election, one has to wonder what will happen to the long overdue Local Plan Update (LPU) and how this will affect Barkham.**

The process of updating the local plan began in 2016 when Wokingham Borough Council published its Issues and Options Document and since then there has been a full public consultation on the draft plan during the period Feb to Mar 2020 and, because of the Grazeley situation, another during the period Nov 2021 to Jan 2022. We are expecting an updated draft including the points raised during the consultation in the Autumn of 2022 but whether this will materialise remains to be seen. This is not the end of the process - there will need to be a further consultation and scrutiny by a planning inspector before the final plan can be put in place.

The mainstay of the latest draft was to establish a fifth Strategic Development Location at Hall Farm

in Arborfield. This was a logical choice because of its proximity to major centres of employment with good access to rail and road links but there will be significant encroachment into the countryside. Needless to say, those living close to this site have objected strongly and some candidates standing during the recent local elections have made this an important part of their manifestos.

At the time, Barkham Parish Council issued a statement that it regretted any proposals that contravened the policies of the joint Arborfield and Barkham Neighbourhood Plan but was relieved that at least the loading of new homes was being spread across the Borough. It also pointed out that any issues raised against the Hall Farm proposal would apply equally to any such development in Barkham.

It is not possible, or right, to speculate at this point what will happen but if the current draft is not adopted in a timely fashion then it could go one of two ways:

- **Hall Farm is removed from the LPU and the housing has to be relocated elsewhere. It is envisaged that 4,500 dwelling will ultimately be built on Hall Farm of which only 2,200 will be required during the current planning horizon to 2037/38. Where will they go?**
- **Further delays whilst negotiating with central Government to reduce the level of new housing required and/or whilst the LPU is reworked will weaken the 5 Year Land Supply (5YLS) metric which is already on the cusp.**

**This metric does not give an indication of the land available for development as the name implies but is a measure of the number of houses the Developers decide they want to build. Manipulation of the 5YLS gives developers complete control at the expense of WBC, the LPU and residents. If the 5YLS fails then planning inspectors can approve other proposals by virtue of Section 11 of the NPPF (National Planning Policy Framework) – the ‘presumption in favour of sustainable development’ As written before, this makes a complete mockery of any attempt to plan sensibly and provide the required infrastructure in a timely and cost-effective fashion.**

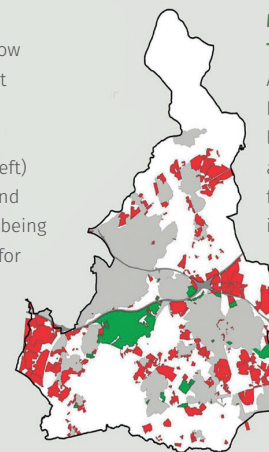
Barkham is very VULNERABLE. There are many other development projects outside the LPU at an advanced stage of readiness such as School Road, Edneys Hill, Barkham Square and Blagrove Lane just on the parish boundary. Any of these could be brought forward if housing is diverted from Hall Farm or if the 5YLS fails. This will be in addition to whatever is already planned and will actually INCREASE housing numbers.

The 2011 census reports there were 1226 households in Barkham. On completion of the Garrison SDL, the proposed developments on the old Reading FC Training Ground and at Rooks Nest Farm, this will approach 3440 – an almost threefold increase in just 25 years. The proposed Solar Farm is another factor. Enough really is enough.

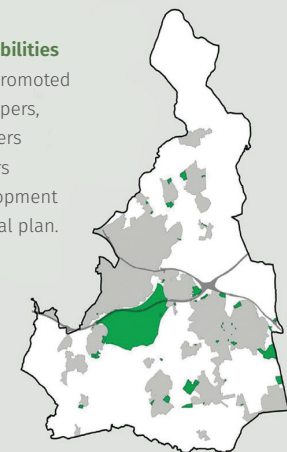
BPC will provide ongoing updates in future additions of Village Info, will work closely with the Barkham Village Development Watch team and use social media to keep you informed about how all this develops and how you can contribute to influencing any decisions.

## Maps

These maps show all the land that was proposed for potential development (left) and only the land that is actually being recommended for new homes and other development in the new Local Plan



**Map 1:  
The possibilities**  
All sites promoted by developers, land owners and others for development in the local plan.



**Map 2:  
The preferred option**  
The sites WBC have proposed for development in the Revised Growth Strategy. A large part of the main site would be public open space.

**Majority of new developments are located south of the M4**

# Hardship Alliance Launches Second Phase Of Household Support Fund

The Hardship Alliance, a group of four local charities and Wokingham Borough Council, is pleased to announce that the second phase of the Household Support Fund is now live in Wokingham Borough.

Like the first phase, the council is working with Citizens Advice Wokingham, First Days Children's Charity, AgeUK Berkshire, and Wokingham United Charities to distribute the funding it has received from Central Government. The Hardship Alliance has agreed it will focus on supporting households in the most need, particularly those with children and pensioners, in line with government guidance:

- Families with children who are eligible for benefits-related free school meals can apply for a one-off £90 voucher (equating to £15 per week) for each child to cover the summer holidays. Please contact One Front Door

or First Days Children's Charity to apply. This replaces previous voucher schemes administered by schools and is for children living in the borough, irrespective of where they go to school.

- Older people of state pension age can apply for a one-off food, fuel, or cash voucher through AgeUK Berkshire or One Front Door.
- Anyone else who is struggling to pay for food, energy bills and other household essentials is encouraged to come forward for help by contacting One Front Door.

One Front Door is a service led by Citizens Advice Wokingham, in partnership with local charities and the council. To apply for any of the support above,

fill in the form on the website, email [contact@citizensadvicewokingham.org.uk](mailto:contact@citizensadvicewokingham.org.uk), or phone 0808 278 7958, 9am to 5pm, Monday to Friday. The team can also check applicants are getting all the other support they're entitled to.

Alternatively, you can contact First Days on 0118 921 9338 or [info@firstdays.net](mailto:info@firstdays.net) for support with free school meal vouchers during the summer holidays, or AgeUK Berkshire on 0118 959 4242 or [info@ageukberkshire.org.uk](mailto:info@ageukberkshire.org.uk) if you are of state pension age.

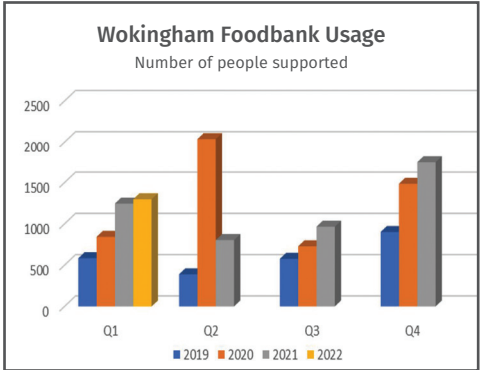
Wokingham Borough Council, Shute End, Wokingham, Berkshire, RG40 1BN

Tel: (0118) 974 6000 Email: [CEM@wokingham.gov.uk](mailto:CEM@wokingham.gov.uk)

Amy Garstang, Chair of the Hardship Alliance and Manager at Wokingham United Charities, said: "During the first phase of the Household Support Fund, it was evident that these grants were a lifeline to so many residents. The Hardship Alliance are pleased to be involved again in offering this support. We know that now, more than ever, there is likely to be even more people facing financial pressure given the rising cost of living. Getting support to those in need is our priority and we want to provide a helping hand. Wokingham Borough is fortunate to have such a well-establish voluntary and community sector and we really want to encourage people to reach out if they are struggling to access the help available."

Cllr Clive Jones, the new Leader of Wokingham Borough Council said: "The rising cost of living is having a severe impact on many households in the borough. We want to do everything we can to support people, particularly when it comes to ensuring no child goes without food over the holidays. While we don't know what extra support Central Government will provide over the autumn and winter months yet, we hope to be able to build on this offering and help our most vulnerable households."

Rachel Bishop-Firth, the new executive member for equalities, inclusion and fighting poverty said: "The Tackling Poverty Strategy, which has been co-produced with the Hardship Alliance, will also be published this month, alongside its dedicated Action Plan. This focuses on supporting residents who are struggling financially, and we look forward to bringing it to life."

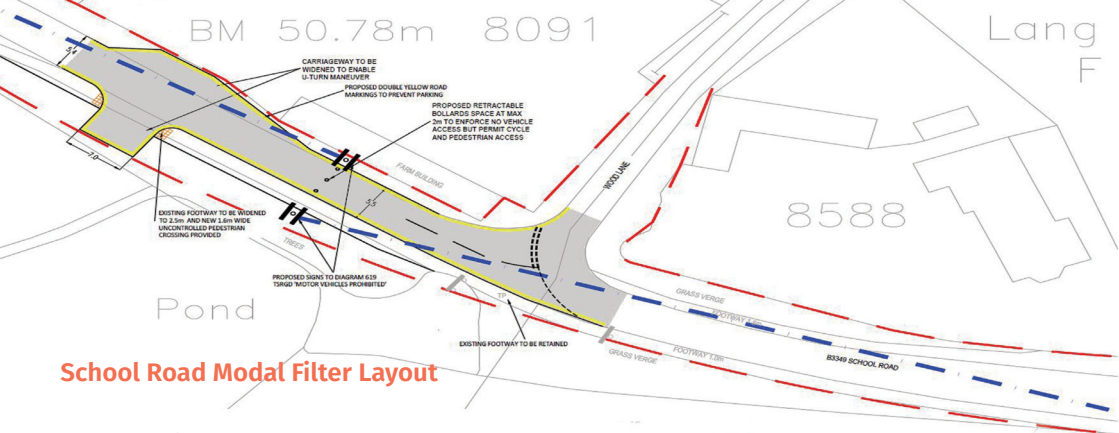


The council is reminding residents of the support available if they need it:

- If you are struggling to pay your Council Tax, you may be eligible to a Council Tax discount or exemption.
- If you receive Housing Benefit or Universal Credit and it doesn't cover all your rent, you may be able to get a Discretionary Housing Payment to help.
- If you are a local business and need help with business rates, or are struggling to pay, you may be eligible for a reduction and further support.
- If you receive certain benefits your child may be eligible for free school meals

For more information about support you may be able to access, please visit the council's online Local Support Hub.





School Road Modal Filter Layout

# Imminent Closure of School Road

A condition for approval of the Arborfield Cross Relief Road was that changes to the road network around Arborfield Cross should be made to ensure that the maximum benefits of the new road would be realised. One aspect of this is to close School Road to through traffic which will be done under an Experimental Traffic Order (ETRO).

The purpose of an ETRO is to allow a period after the change has been made when comments, representations and objections can be made to Wokingham Borough Council (WBC) before the traffic order is made permanent. The advantage of this approach is that residents will then have the opportunity to comment on how the road closure is working in practice including the impact on Langley Common Road and any congestion outside The Coombes Primary School.

The road will be blocked with a ‘Modal Filter’ about 30 metres northwest of the junction with Woods Lane and the works are currently planned to take place during school holidays. A modal filter simply means to bring about change in behaviour – in this case providing a barrier to vehicles whilst allowing pedestrians, cyclists and horses to pass.

The understanding is that a ETRO will come into force once the works are complete, and it can only

stay in place for a maximum of 18 months while the effects are monitored and assessed. Following feedback or objections received during the first 6 months changes to the experimental order can be made. If changes are then made there will be further period of 6 months when further objections can be made before the Council decides whether or not to continue with the changes on a permanent basis.

This has a bearing on another issue being considered and that is how the junction between School Road and Langley Common Road can be made safer. A WBC project team have recently carried out a technical assessment on the junction and the outcome is that it could be made safer for smaller vehicles by squaring off the junction. However, this proposed solution was seen to be impractical on safety grounds as this would cause larger vehicles to overrun the pavement. If the School Road was to close, the only large vehicles travelling on School will be those travelling to/from the Instalcom Operation located in Woods Lane. Currently there is an outstanding appeal over the enforcement against the redevelopment and change of use of this site at Woodlands Farm and if the appeal is dismissed this may force this operation to relocate and reduce further the number of larger vehicles using this junction.

# Family Fun Day which celebrated the Queens Platinum Jubilee



Photo credit: David Clements BVRA

Celebration of Her Majesty The Queen’s Platinum Jubilee, Barkham Parish Council with Barkham Village Residents Association held a family fun day on Saturday 4th June 2022, to mark the occasion.



Photo credit: David Clements BVRA



Cllr Heyliger enjoying the Egg & Spoon Race

Although the day started out raining, by late morning it had turned overcast, and by lunchtime the sun was beginning to appear. The afternoon was glorious, enabling the activities to be held outside.



Black Swan Handbells

The day was a great success, with those attending expressing their appreciation for the event. Attendees were treated to a performance by the Black Swan Hand Bell Group and a performance by the Breakaway Brass Band. There were fun and games to be had at the various stalls, and the sports day games were enjoyed by those who took part, especially Cllr Heyliger in the adults Egg and Spoon Race!



Barkham Ladies Cafe

Thanks go to the BVRA for helping to organise the event, Barkham Ladies for providing teas, coffees and cakes, Barkham Village Hall for the use of the hall and grounds, The Black Swan Hand Bell Ringers for their performance, Cathy Whittington, for providing the fun sports day games, Breakaway Brass Band for their performance, the stall holders for their attendance and finally, to the residents who attended, and made the day successful! Thank you all.



Breakaway Brass Band



Trees being planted



# Tree Planting at Barkham Fields

**As part of Wokingham Borough Councils Tree Project which aims to plant 250,000 trees, 147 trees were planted on Barkham Fields, adjacent to the playing pitches, around the 2 Oak trees, on Monday 28th March 2022.**



First half completed

Volunteers from the Parish Council and local community turned up to help plant the trees along with Wokingham Borough Council Contractors. The planting of the trees took approximately 2.5 hours, and it is hoped that the trees will add to the character of the area and encourage biodiversity.

The Tree Project, which launched in October 2021, has so far seen over 15,000 trees planted across the borough. This has been achieved through collaboration with Parish & Town Councils, schools, community groups and private landowners.

Further planting is expected to occur in the next planting season, which begins in October 2022, with further sites being identified in the area. If you have an area in mind that can be put forward to WBC, please contact the Clerk at Barkham Parish Council who will pass the information to the Tree Project Manager for consideration.



All trees planted

# Tackling Traffic Speed In Barkham

**Speeding on our roads is one of the factors that most affects the quality of life in communities and in an attempt to improve road safety and to educate drivers to observe the speed limits, the Parish Council will over the coming months be installing a few Vehicle Activation Sign (VAS) on certain roads within Barkham.**

On a trial basis they have recently taken delivery of a VAS that is now located on Barkham Road. Currently this is battery operated but to avoid continually recharging the battery, the intention is to mains power the VAS from the lamp post where it's now connected. This is a sophisticated Speed Watch sign producing dot-matrix displays that can graphically display drivers 'speeds' when approached and is programmed to display a full range of messages, such as 'Thank You' in Green if within the limit or 'Too fast' in Red if exceeding the limit by more than 10%.

In a further step to improve road safety, a new automated Community Speed Watch (CSW) scheme has in the last few months been introduced by the new local police Commissioner. Under a national initiative to educate drivers to reduce speeding through communities, this will now be based on the image capture of vehicles exceeding the speed limit (by 10% +2). This will replace the former Speed Watch scheme and will eliminate the need to manually record vehicle details while on site. It will provide a much higher degree of accuracy and will require fewer volunteers at each speed watch session. A portable tripod mounted radar camera will take images of speeding vehicles with the time, location and speed superimposed. At the end of each session, this will be reviewed, and the information passed to Thames Valley Police (TVP) so they can automatically generate warning letters to be sent to those offending motorists. Barkham through

BPC's Road Safety Committee (RSC) has recently joined the CSW online scheme and is in the process of setting itself up. Each volunteer participating under the Scheme whether as a Co-ordinator or an Operator will have to undergo online training by TVP on issues such as H&S, risk assessment etc and will be required to pass a test before being accepted. Individual portable camera sites will need to be assessed and approved by TVP. Once members of the RSC have trialled the scheme and are comfortable with it, the intention will be to roll this out to other speed watch volunteers who can join as Operators. Radar camera devices will also need to be approved by TVP and the team are now in the process of carefully evaluating the most suitable products before making a purchase recommendation to Barkham Parish Council.



VAS on Barkham Road



# An update from Barkham Ward Councillor – John Kaiser



## Arborfield Green

**At Long last the promised facilities at Arborfield green is beginning to come forward residents have been given**

**their first detailed look at plans for a district centre with shops and other amenities.**

Developer Crest Nicholson have made public provisional designs and sought people's views on them at a public exhibition in April and says it will consider the feedback before it submits a planning application to us by the end of autumn.

The development, which would be located off Nine Mile Ride Extension near Bohunt secondary school and Arborfield Green Leisure Centre, is set to include a larger supermarket with a row of smaller shops and a 'village square' for socialising.

There will be a community centre incorporating a nursery with an outdoor play area to accommodate eighty children plus a café, library, spaces for health treatments, worship and performances, and meeting rooms and offices for hire.

The proposal includes a pub with a garden overlooking the green space to the north, community allotments, new paths offering better cycling and walking routes to the surrounding area and a new access road to the leisure centre.

Crest, which is required to provide the centre as a condition of the planning permission granted for new

housing in the area, is going to restore the former Infirmary Stables on the site and open them up to the community.

The usage will be decided based on people's comments and until then the building, which was once a hospital for Army horses and is now officially recognised as a historic monument, is protected from the elements to keep it in good condition.

By the end of the summer, Crest also aims to submit a planning application for a new pavilion at Arborfield Green cricket ground, which would replace a similar, outdated building on the site off Tope Road. The proposal includes new cricket and football pitches and improvements on the recreation ground to the north.

We know we have all been waiting a long time for the district centre, and I engaged with the developer Crest to make it happen as soon as possible. Crest has apologised for the delay in providing updates and says the project was held back by the coronavirus pandemic, which caused uncertainty among potential occupiers.

Meanwhile, the council is working with Crest Nicholson to provide a permanent pedestrian crossing on Biggs Lane, near Farley Hill Primary School and the junction with Princess Marina Drive, within the next few months.

There is a temporary crossing there now which I insisted on once the school was open, but the developers are required to install a permanent one as a condition of its planning consent for new homes – I have told officers and Crest that this must be delivered as soon as possible.

The council is almost ready to open the southern half of Nine Mile Ride Extension at Arborfield, which will join the completed northern half to create a link through the development between Nine Mile Ride and the A327 Eversley Road roundabout hopefully this will bring relief to Commonfield Lane and Barkham Road as another route to and from Wokingham linking up with the new Arborfield relief road.

## Litter

The truth is laziness and carelessness and a lack of pride in communities have bred a culture of habitual littering. Typically, people have become too lazy and unwilling to throw away their rubbish appropriately.

---

*“ Many people have blamed littering on local councils and the lack of public bins ”*

---

Carelessness and thoughtlessness has also made people just throw rubbish anywhere without even thinking about it. Since people perceive there is no consequence for their action when they throw items anyhow and anywhere, it can create the 'I do not care' attitude in the wider community. The act of pedestrians getting rid of food and sweet wrappers and other wastes on the pavements and streets or motorist throwing it from their cars clearly reveals this kind of attitude. The majority of people who do this believe it is up to others who will pick or clean it up.

Many people have blamed littering on local councils and the lack of public bins. Some places have them, but they are not enough, while some of the existing ones are sometimes poorly managed, which leads to overloading of the containers. Besides, animal scavengers and blowing wind can dislodge the items and scatter them around.

It is something I am aware of, and the council have said they are doing the best they can to ensure there are adequate bins and ensure they are correctly managed, we can all do our bit by either using the bins available, or if not taking our litter home. Many people do not seem to understand that their littering not only looks unsightly but has a negative impact the environment. As a result, people continue to throw litter anywhere without thinking of their environmental consequences.

Millions of pounds are spent by councils across the UK to clean up litter. This makes littering a huge problem because that money would otherwise be used in delivering much needed services, remembering that this money is yours paid in your taxes and fees as the only income the council has is direct from us the residents

Litter can also block drainage systems and cause urban flooding, which requires money for intervention and restoration.

Plastic litter has often been mistaken for food by pets and wildlife alike and when consumed by the animals, they reduce stomach capacity since they cannot be digested. In the long-term, it affects the animals' eating habits, eventually killing the animal.

Not least, It also causes visual pollution and affects people's quality of life and can reduce property values after all who wants to live in a dump.

Community and school programmes can help as can properly managed bins in the right location and I will be pushing the council to embark on these actions using our links with schools via the councils' children services department.

Any campaigns can also be incorporated in town and village notice boards, social media platforms, and newsletters to spread the message widely.

Putting up signs is a highly effective way of putting a stop to littering. The signs should be placed in highly

littered areas and those that are prone to littering, such as the streets near public transport stations.

Routes used on a daily basis by pedestrians and commuters also deserve 'stop littering signs' to constantly remind people that littering is a dreadful thing and should thus be avoided.

The relevant local authorities, both town and Parish councils, as well as the Borough council all have a part in solving this problem to ensure more rubbish bins are installed in various areas for effective disposal.

Putting up enough bins in town centres, walking routes, green ways, public areas, and near bus stops as well as fast-food outlets is important. Moreover, to avoid additional problems due to overfilling, the bins must be emptied regularly, or it will lead to additional littering around the area of the relevant bin.

Education is crucial to mitigate the littering issue. People need to know how their actions in their daily life affect the environment. We all have to make people understand that it is quite easy to avoid littering and thus contribute to protecting the environment.

*“Local Plans establish land that cannot be built on as much as land that can”*

This education should start in schools as children and youth play a crucial role in shaping communities and making it clean and beautiful. Children are good learners, and they adjust their behaviour more easily than most adults.

Moreover, children may convince their parents to avoid littering. Additionally, when the children grow up being aware of the littering problem, they may be motivated to take measures to mitigate it.

Small things like Keep a litter bag in your car and also along with you whenever you are out and throw your rubbish in your bag until you find a bin or take it home. This action will not only keep your car clean and organized but also keep the streets clean.

It's our communities in the same way it's our litter which scars our environment, with just a little bit of thought we can drive litter from our streets and countryside, without us all playing our part no matter how many bins the council install It will not solve the problem as it's a community problem and we all have a part to play.

## Local Plan update

The Government, along with all major political parties is committed to mass housing development across the country. Labour 250,000 Liberal Democrats 380,000 and Conservative 200,000 (1m over 5years) homes per year and the target of 781 homes to be built per year in Wokingham Borough by 2038. Our current Local Plan can meet some of these additional homes but is out of date and we need a new Local Plan that plans for an additional 6,000 new homes.

Currently we have no choice but to meet that target and there is no possibility of doing so without building on green space. I would very much like to build all the new homes on previously developed (brownfield) land but there is simply not enough of that available in the borough.

To meet the imposed housing target, the council is legally required to produce something called a Local Plan – We are required to have a Local Plan, a complex set of documents that, among other things, sets out where homes can be built and, importantly, where they cannot. If we refuse to produce one or try to produce one that does not meet the Government's target, the Government could produce one for the borough and impose it upon us. Even worse, this means that we do not have a 5-year land supply which is the number one consideration for

government planning inspectors at appeals hearings. In such a case, where the council has refused planning permission and the applicant has appealed against the ruling, the appeal will succeed, meaning even more (unplanned) housing development.

By having a gap in the land supply, when we have only our old Local Plan in place, means we would lose the ability to protect any of our green spaces because even if the council refuses planning permission, developers would no doubt win at appeal overturning the council's decision.

Do not forget Local Plans establish land that cannot be built on as much as land that can.

Wokingham is a great place to live but with that brings the problems of people wanting to come here to live, this coupled with developers who have their eyes on all green space in the borough and know they can sell every home they build.

The farmland and other green spaces in the borough is certainly 'optioned' to a housing developer, meaning the developer has made a deal with the

landowner to buy the land, who are in most cases are keen to sell because of the huge monetary gains, should they get permission to build on it. These developers would be rubbing their hands with glee if we delay or discard our draft Local Plan as it would leave so much more of our countryside open to potential development. Should this happen, we will have the prospect of no green space in the borough.

This being the case my message to the new coalition administration running the borough council is:

***'Don't delay the Local plan as failure to deliver it puts all the green spaces in the borough at risk and is the only way to avoid Wokingham becoming an unplanned urban sprawl.'***

**Councillor John Kaiser**

Councillor for Barkham, Wokingham Borough Council

**Email: [john.kaiser@wokingham.gov.uk](mailto:john.kaiser@wokingham.gov.uk)**

**Telephone: 07714192352**

## BARKHAM VILLAGE HALL CHARITY

REQUIRES A NEW

## BOOKING SECRETARY & TREASURER

These roles could be single or combined

If you are community minded and enjoy dealing with people, the Booking Secretary position would suit you.

The Treasurer position is not onerous, but would require a knowledge of accounts, spreadsheets and IT etc.

**There is a salary of £2,000 per annum**

To find out more details please Contact:  
**Derek Oxbrough**

**[doxbrough@hotmail.com](mailto:doxbrough@hotmail.com)**  
**Tel: 01189760578**

## "Daft place to put a bollard."

We don't judge, we just fix it.



- Bumper Scuffs
- Dents
- Paintless Dent Removal
- Alloy Wheel Refurbishment
- Key Scratches
- Accident Damage
- Headlight Restoration
- Signwriting Removal
- Supagard Paint Protection

**ALL OUR REPAIRS ARE:**

- Completed Same Day
- Professional Quality
- Convenient
- Cost Effective
- Mobile

**ChipsAway**

**LIKE IT NEVER HAPPENED**  
**CHRIS & LACEY ASHDOWN**

Call us today on 07496 375043 for a FREE estimate on repairs to bumper scuffs, paint scratches, minor dents and alloy wheels. Find out more at [chipsawaywokingham.co.uk](http://chipsawaywokingham.co.uk) or email [chris.ashdown@chipsaway.co.uk](mailto:chris.ashdown@chipsaway.co.uk)



# The Community Infrastructure Levy

**The Community Infrastructure Levy (CIL) is a planning charge, introduced by the Planning Act 2008 as a tool for local authorities in England and Wales to help deliver infrastructure to support the development of their area. It came into force on 6 April 2010 through the Community Infrastructure Levy Regulations 2010. Development may be liable for a charge under the CIL if your local planning authority has chosen to set a charge in its area.**

Most new development which creates net additional floor space of 100 square metres or more, or creates a new dwelling, is potentially liable for the levy.

## What could CIL mean to you?

The world of planning and development is beset by acronyms and abbreviations. Many can be cheerfully ignored by residents. However, CIL, or the Community Infrastructure Levy, is worth understanding as developers of new houses have to pay it and local residents should see a benefit from it in the form of new facilities.

Firstly, why do we need any kind of levy on new building work? The answer is fairly simple. The addition of housing creates a demand for new roads, new schools, etc, and the local authority has to find a way of creating and paying for this new infrastructure.

It isn't a new concept. Developers have for years been required to enter into so called S106 agreements. These defined the agreed pots of money needed as a contribution towards various kinds of infrastructure, often with trigger points for payment dependent on building rates. The money collected by S106 goes straight to the local authority and earmarked for capital spending and that alone. There would of course be arguments from developers about the amount of mitigation needed to offset the effect of their new development.



CIL was introduced in 2010 as an entirely new way of raising and allocating funds and in most cases replaces S106. Wokingham Borough Council decided to set a CIL rate that at present equates to between £300- £365 per square metre per new house. This money is then used for infrastructure projects. Parish councils without a Neighbourhood Plan get 15% of the levy for local projects, although this amount is capped at £100 per rateable household. This means that the most that BPC could receive is about £130k per year as a result of new housing in the area. So, an additional 1000 new homes in Barkham would mean a considerable increase in CIL income for Barkham Parish Council.

Parish councils have the ability (in theory at least) to spend CIL money on infrastructure projects of their own choosing. CIL receipts can only be used on infrastructure projects, not on reducing the rates!

So where are we now? Firstly, BPC does not receive any CIL money for the development at Arborfield Green. That development was approved the day before the CIL legislation came into force.

However, some of the effects of the S106 agreement with the Arborfield Green developer will be seen by residents. The one that has had the most visual impact and safety improvement has been the new Barkham bridge.

BPC's proposal to Wokingham Borough Council to create a footpath on the north side of Barkham Street was accepted and has been completed.

BPC has been receiving CIL money from new housing in the area since 2018. So far this amounts to some £206,166.83. It's a sizeable amount, but the creation of new infrastructure isn't cheap.

In the past 3 years BPC has spent CIL money on footpath kissing gates, speed watch equipment, the new footpath in Hazebrouke Meadow and the replacement of windows at Barkham Village Hall. The remaining CIL Funds after paying for these projects is £183,953.45.

BPC have a list of projects that are being looked into, including an electricity supply at Barkham Fields to enable small events to be held such as village fetes, further speed calming equipment, a pedestrian crossing on Barkham Street, bus shelter upgrades and a footpath upgrade to footpath BA10, between St James Church and Rooks Nest SANG.

## Help us allocate funds for improving infrastructure

Barkham Parish Council has a sizeable pot of CIL money arising from new housing in the area.

There is a fairly wide definition of infrastructure, but BPC will check that any parish scheme meets the criteria. The money can be spent on parish projects, or projects suggested by Wokingham Borough Council. BPC can also put forward projects to WBC that might be co-funded by other CIL recipients and other parishes can put forward their projects that BPC could support.

Residents' views are important. Your suggestions for facilities and infrastructure that BPC could consider are welcome. They should be sent to the Parish Clerk. Simply tell us very briefly what should be considered and whom it would benefit.

# Annual litter pick resumes in Barkham

**After a two-year break due to Covid, the annual litter pick in Barkham resumed this year. Organised by the Parish Council in conjunction with Wokingham Borough Council, the event took place on Sunday 3rd April 2022, and volunteers met at the Barkham Village Hall to be assigned a road or area to clear.**

There were 11 groups of volunteers who turned up to litter pick around the area of Barkham, and this included some children along with their parents, that were working towards a badge for Beavers and Cubs.

Whilst there were less volunteers than in previous years, there was also less litter to be collected on the roads that were cleaned.

A total of 27 bags of litter were collected, along with some larger fly tipped items such as wire fencing, a liquid carrier, hub caps and pipes. Some items that were too large to be cleared by the Volunteers, were reported to Wokingham Borough Council to clear.

Volunteers were rewarded with bacon butties, tea, coffee, biscuits and cake upon their return to the Village Hall.

Thanks go to the Barkham Village Hall for allowing the parish council to use the hall grounds as a meeting place & for use of the facilities to provide refreshments, and to all the volunteers who turned up to help on the day.





# C.A.E. AUTOS

## 0118 977 1188

**FREE COLLECTION AND DELIVERY from home or work\***

Family Run Local Garage  
Honest and Reliable  
ALL types of repair work  
ALL makes and models  
FREE Bulb/Wiper Fitting  
Servicing, MOT work, etc

 @caeautos  
 @caewokingham  
[www.cae-wokingham.co.uk](http://www.cae-wokingham.co.uk)

CAE Ltd Wokingham  
CALL 24/7 on 0118 977 1188 or 07956169265  
\*within local area

## Village INFO

[www.barkham-parishcouncil.org.uk](http://www.barkham-parishcouncil.org.uk) has a host of information about police, doctors contacts, etc under local information and directory. A few of the contacts are reproduced here. Let Ellen Tims (Parish Clerk) know if you would like a local organisation, club etc, to be highlighted here in a future issue.

### Barkham Parochial Charities

providing help to those in need - Malcolm Clark via Parish Clerk

### Barkham Pre School

[www.barkhampreschool.net](http://www.barkhampreschool.net)

### Barkham St James Church

[www.achurchnearyou.com](http://www.achurchnearyou.com)

### BVRA residents' association

[www.barkham.org.uk](http://www.barkham.org.uk)

### Barkham Village Store

01189 799131.  
[barkhamvillagestore@hotmail.co.uk](mailto:barkhamvillagestore@hotmail.co.uk)

### 1st Wokingham Beaver, Cub and Scout Group

[www.firstwokingham.org.uk](http://www.firstwokingham.org.uk)

### The Bull at Barkham

[www.thebullbarkham.com](http://www.thebullbarkham.com)

### The Coombes CE Primary School.

[www.thecoombes.com](http://www.thecoombes.com)

### Wokingham Job Support Centre

[www.wjsc.org.uk](http://www.wjsc.org.uk)

### Wokingham Citizens Advice Bureau

[www.citizensadvicewokingham.org.uk](http://www.citizensadvicewokingham.org.uk)

### Wokingham Cancer Care Trust

[www.wdcct.org](http://www.wdcct.org)

### Shine WBC activities for the over 50s

[www.wokingham.gov.uk](http://www.wokingham.gov.uk)

### Reach Wokingham

[www.reachwokingham.com](http://www.reachwokingham.com)

### Farley Hill Primary School

[www.farleyhillprimary.co.uk](http://www.farleyhillprimary.co.uk)

# Barkham Parish Council

## Become a Councillor

**Barkham Parish Council is the closest tier of government to our community, and we have the responsibility of making decisions on behalf of the people of the Parish.**

Often the first point of call for resident's queries and concerns, the Parish Council takes our duty to serve the people of Barkham seriously and we want to see our village flourish. Therefore, we encourage people to come forward to let us know what they want from us and suggest ways that we could do things better.

What matters to you matters to us, so whether that is about local planning issues, more recreational facilities for young people, better services for older people or traffic calming measures, we want you to tell us about it.

If you would like to join us as a councillor read on to find out more...

## What it means to be a Parish Councillor

Parish Councillors have a real opportunity to make a positive and lasting difference in the lives of the people in their community. Whilst we work with Wokingham Borough Council, our unique position at the heart of the community means that we are better placed to understand the needs of residents and do something about it. After all councillors are just people that live in the village like you, with a passion to see Barkham thrive.

It's so important that we represent the interests of the whole community and getting to grips with the village's diverse groups is key to being a councillor. While we want councillors that can bring their own strengths

and ideas to the table, it is also about how they engage with their electors to ensure that every voice gets heard.

Forget any stereotypes you may hold about the sort of person that stands to be a councillor, we celebrate our diversity and make better decisions because of it. You don't need any special skills to be a councillor however having or being able to develop the following skills, knowledge and attributes will help you in the role:

- **Communication Skills**
- **Problem Solving**
- **Team working**
- **Organisational skills**
- **Ability to engage your local community**

We meet on the second Tuesday of the month at the Arborfield Green Community Centre from 7.30pm. Why not come along to see the Council in action. Our councillors are always happy to answer any questions and tell you what their experience of being a councillor is.



To find out more about joining Barkham Parish Council contact the Clerk on **0118 976 2089**, email [clerk@barkham-parishcouncil.org.uk](mailto:clerk@barkham-parishcouncil.org.uk) or call in at our office in the **Community Centre**, open between **09.30 to 14:00 Monday to Thursday** (except bank holidays).





# THE BEST FOR...



## **A1** Car Spares

We have invested in the very latest second hand car processing capabilities. Not only do we de-pollute end-of-life-vehicles (ELVs), but we also offer you second hand car spares at amazing prices. If you are looking for second hand car spares that are rare, there is a good chance that we have them!



## **A1** Loo Hire

We not only provide facility hire but offer an unrivalled waste disposal service which has catered for many of the UK's major outdoor events. The A1 group has delivered total waste management solutions for over 15 years and has developed A1 Loo Hire to meet significant growth in line with increasing client requirements.



## **A1** Wet Waste

Wokingham Wet Waste is one of the countries leading Waste Management companies in the UK, embracing new technology and the very latest equipment available in order to deliver real added value to our clients.



## **A1** Metal Recycling

Investment in the very latest processing capabilities has seen Wokingham Metal Recycling acquire two SEDA Fixed Station De-pollution rigs. Top prices paid for your scrap metal, scrap cars and MoT failures. We also supply high quality scrap metal at great prices.

Contact us for more information or visit Highland Avenue, Wokingham

Tel: 0118 978 5143 [www.a1groupuk.com](http://www.a1groupuk.com)

