

School Road Closure



We stand with

UKRAINE

**BARKHAM &
ARBORFIELD GREEN**

Village **INFO**

October/November 2022

COUNCILLOR VACANCIES



“YOUR COMMUNITY NEEDS
YOU”

COME AND JOIN YOUR PARISH COUNCIL

Contact our Parish Clerk Tel: 0118 976 2089 Email: clerk@barkham-parishcouncil.org.uk

Contents

Village **INFO**

Free to all residents in Barkham and most of Arborfield Green.

Circulation: 1500.

Published by Barkham Parish Council.

Vol. 5 Number 8 – October/November 2022

Pam Stubbs (BPC Chairman), Mike Bundred (Editor) and Ellen Tims (Parish Clerk).

Village INFO and the Parish web site aim to keep residents informed of issues and opportunities affecting the area.

See web site for the Council's meetings (every month except August) at the Arborfield Green Community Centre.

www.barkham-parishcouncil.org.uk

Contact Ellen Tims, Barkham Parish Clerk, for details of advertising and frequency.

Tel: 0118 9762089

Arborfield Green Community Centre, Sheerlands Road, Arborfield, RG2 9ND.

Public Open Hours: Mon – Wed, 10am – 12pm

Office hours: Mon – Thurs, 10.00am – 2.00pm

Design and layout by David Carr.

Printed in England by Solopress.

Inclusion of editorial or advertising material in *Village* INFO does not imply any endorsement or support by Barkham Parish Council (BPC). The Council also accepts no responsibility for views expressed by contributors or for any omission or error in production.

All editorial content © copyright 2021 BPC except where otherwise indicated. Not to be reproduced without permission.

Highlights



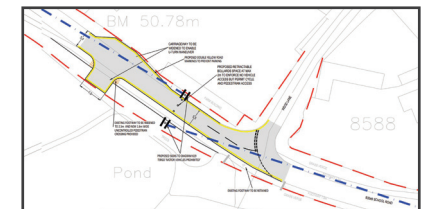
Get help with the Cost of Living

Find out how you can get help



The Local Plan Update

What implications does Barkham Face?



School Road Closure

How to submit comments on the ETRO



Arborfield Green Development

An update on the development at Arborfield Green

WBC News

Get help with the cost of living

Help is available for those struggling due to the cost of living crisis in Wokingham borough. The council is working in partnership Age UK Berkshire, Citizens Advice Wokingham, First Days Children's Charity, Wokingham Foodbank and Wokingham United Charities to respond to issues locally.

The group, known as The Hardship Alliance, will be launching a range of initiatives in the weeks ahead to help residents from across the area.

Amy Garstang, chair of the Hardship Alliance and Manager at Wokingham United Charities, said: "The Hardship Alliance is bringing the borough together to help all those in need as we respond to the cost of living crisis.

"We're going to provide a helping hand to people through a variety of projects in the winter months. Financial pressures continue to rise and these schemes will use our well-established voluntary and community sector to step up once again to do what they do best – provide a lifeline to those who need one."

This will feed into the incredible support already offered across the area's voluntary, community and faith sectors. Residents are urged to come forward as soon as possible if they are struggling. Initial projects to help include:

- Providing support, reassurance and advice for those who are struggling.
- Setting up places and activities people can visit to keep warm through the winter.

- The alliance and council staff will work together in community locations to provide advice and guidance for anyone in the community that needs help.
- Support for those in period poverty.
- A new round of the Household Support Fund, to help those in need of support with food and energy costs.
- Created an online cost of living help hub to guide people to help available and to promote ways to get involved and support the community.

More details on these and other schemes will be announced once they have been finalised.

Leader of Wokingham Borough Council Cllr Clive Jones said: "The cost of living crisis is putting many of our residents under enormous pressure and we are working with partners to alleviate problems as far as we can.

"We cannot do everything but, in collaboration with our excellent voluntary and community sector, we can offer help to those many people in increasing need."

Citizens Advice Wokingham is running a survey to capture how people are finding the cost of living crisis already in the area. If you need help now you can contact One Front Door, a service led by Citizens Advice Wokingham that helps residents find the most appropriate support.

This could be from the council or across our local voluntary sector, depending on which organisation is best placed to assist. Use the Citizens Advice Wokingham online referral form or call 0808 278 7958, Monday to Friday.

Cllr Rachel Bishop-Firth, executive member for equalities, inclusion and fighting poverty, said: "Wokingham Borough Council and our voluntary and community sector partners are here to help all our residents to get through a very tough winter.

"If you need a helping hand in these difficult times, please reach out to One Front Door as soon as possible. Their team of experienced volunteers are speaking to many local people who are facing the same issues, including many people who haven't had to ask for help before.

"They have enormous experience and will support you to find the best solutions to whatever it is that you're facing."

The Hardship Alliance was formed last year to help the borough work together to help those most in need.

Further information:

More from contact the communications, engagement and marketing team via CEM@wokingham.gov.uk

Cost of living support

Check help you could get on the cost of living help hub



Wokingham Wellbeing Service

Low mood? Feelings of anxiety? Perhaps you're struggling to sleep, dealing with multiple responsibilities, or feeling overwhelmed and unsure where to start?

Mind in Berkshire Wellbeing Workers can offer free one-to-one appointments for people aged 18 and over in Wokingham. These sessions enable people to put practical things in place that can help them feel more able to manage everyday stress and wellbeing challenges. Wellbeing Workers can:

- Give you time, space and support to listen to your concerns and help you identify what is important to you.
- Tell you about relevant services, resources and tools you can access to improve your wellbeing.
- Support you to identify goals and encourage you to work towards them.

We can offer telephone, video or face-to-face (in some GP practices) sessions – depending on what works for you, just get in touch via one of the options below!

Your GP practice or another professional who is supporting you can also make a referral on your behalf.

Contact

Website: Complete an online referral form here: <https://services.theioyapp.com/en/listings/489>

Telephone: 01865 24 77 88

Email: WokinghamWellbeing@oxfordshiremind.org.uk

Helping young families through their most challenging times



If you are a parents with young children and are struggling to cope, we can help. We have trained volunteers who offer compassionate and non-judgmental home-visiting and group support.

For details contact: 0118 9888025 or admin@home-startwd.org.uk

www.home-startwd.org.uk



Charity no. 1109629

Arborfield Green District Centre and Barkham Parish Council

There has been much talk on social media recently regarding the Arborfield Green District Centre. Barkham Parish Council, therefore, would like to take the opportunity to outline its understanding of the current position on the matter.

Most of the Strategic Development Area known as Arborfield Green lies within the parish of Barkham. As part of the development Crest Nicholson were required to build a District Centre. The delivery of the District Centre, however, is late. We have raised this with Crest on several occasions and they have said that the delay was primarily due to the uncertainty created by Covid in 2020 and 2021. We are not wholly convinced by this argument but must accept it and, in any event, the priority must be to move the project forward.

On 30th April 2022 Crest held a Public Consultation on the District Centre. This took the form of an exhibition in the existing Arborfield Green Community Centre off Princess Marina Drive / Sheerlands Road together with online access to the Crest proposal. The proposal consisted of several elements including a supermarket, a pub, retail units and a new community centre. The latter was to be housed in an existing, legacy building. Feedback could be provided via paper forms at the exhibition and online.

Between June and August Crest held several meetings to further refine their proposal based on the feedback that they had received. The number, timing and invitees to these meetings was solely at the discretion of Crest. Representatives of the parish council attended two meetings in July and one on 17th August. There have been no meetings since.

Crest, understandably, required confidentiality to be observed on what was an emerging plan. This made it difficult for the parish council to provide updates to the residents of Arborfield Green.

In the absence of any further developments in September, the parish council arranged a meeting with WBC planning officers on 12th October. This meeting proved very useful, and we were grateful for the opportunity to meet with the officers. During the meeting the officers advised that they would be meeting with Crest soon and that a further Public Consultation based on the updated proposal was likely to follow shortly after that.

One of the difficulties that we have faced, as a council, is knowing what the Arborfield Green residents may or may not want. We have been unable to persuade Crest to share the results of the April feedback with us. In this respect, if/when there is a further consultation, we would encourage residents to send their feedback to both ourselves and to Crest. Comments to the council can be made by post or via email to:

feedback@barkham-parishcouncil.org.uk

Finally, we would wish to stress that we have been working tirelessly on the delivery of the District Centre for the benefit of the residents of Arborfield Green since April. However, it is important to understand that we do not have any direct authority to affect either the timelines or the eventual outcome.

We thank you for your support.

CAB Article



Thank you for the opportunity to reach out to you. I'm Jake Morrison, the Chief Executive at Citizens Advice Wokingham. We're a local charity that has supported people across Wokingham Borough since 1977. We provide free advice, information and support to help people find a way forward with their problems.

Over the last two years, we've helped 201 people who've come to Citizens Advice with their issues - of which we helped with 1,085 - that's around 5 issues per person.

The most common issues in Barkham were benefits & tax credits, Housing, Employment, Debt and access to charitable support and food banks.

Most of the issues we come across are around welfare benefits, debt, housing, employment law and

relationships & family, and that hasn't changed for a long time.

But we're facing a cost-of-living crisis, so whilst those issues remain high, helping people to access essentials such as food and clothing has continued to be high since the start of the COVID pandemic and is growing.

The cost-of-living situation is impacting people to varying degrees, and this means that a variety of responses are needed.

We put out a survey on the cost of living for Wokingham Borough earlier in October and had over 650 responses. Asked about what help people have accessed, 77% of respondents, who are worried about the cost of living crisis, hadn't reached out to anyone for help. The second and third most frequent responses were about borrowing from family, friends or a loan from the bank.

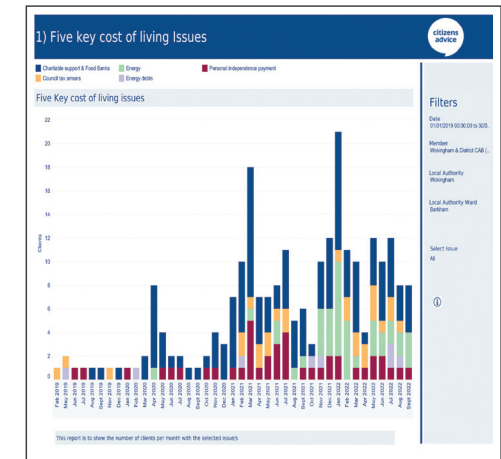
What we're seeing across the country through our sister charities is:

- The scale and size of the crisis is unlike even what we were seeing during the pandemic.
- We're nationally helping 2 people every minute with crisis support, such as referrals to food banks and fuel vouchers - locally we're helping as many people with access to foodbanks and other essentials in a day what we used to do in two or three months in 2019.
- Government support will be swallowed up by rising costs and some groups, such as disabled people, are facing significantly more harm than others.

We're encouraging people to:

- Take a look at our website - cawokingham.org.uk - we have a page on cost of living support locally, listed under the advice heading on our menu bar.
- Our home page also has links to a benefit calculator - take 10 minutes out of your day to see if you're getting the support you could be entitled to.
- We've also got a budget tool, to help you map out your income and expenditure.
- Reach out to us, via our One Front Door, if you're in need of help and support, or you don't know where to turn. You can refer online via our website opposite, or call us on 0808 278 7958

Monday-Friday 9am-5pm, please note that demand for phone is really high right now, but if you wait or leave a voicemail we will get back to you when we can.



Five key cost of living Issues

Charity Contact Details

Barkham Parochial Charities

Tel: 0118 979 0070

Citizens Advice Wokingham

Tel: 0808 278 7958 (Monday-Friday, 9am-5pm)

Online: cawokingham.org.uk

Home Start Wokingham

Tel: 0118 988 8025

admin@home-startwd.org.uk

Involve

Tel: 01344 304 404

Online: involve.community/referral

Keep Mobile

Tel: 0345 544 0850

The Link Visiting Scheme

Tel: 0118 979 8019

Online: linkvisiting.org

Promise Inclusion

Tel: 0300 777 8539 or 07827 340 405

admin@promiseinclusion.org

Wokingham United Charities

Tel: 0118 403 2980

grants@wokinghamunitedcharities.org.uk

Wokingham Wellbeing Service

Tel: 01865 24 77 88

WokinghamWellbeing@oxfordshiremind.org.uk

The Local Plan and Implications for Barkham

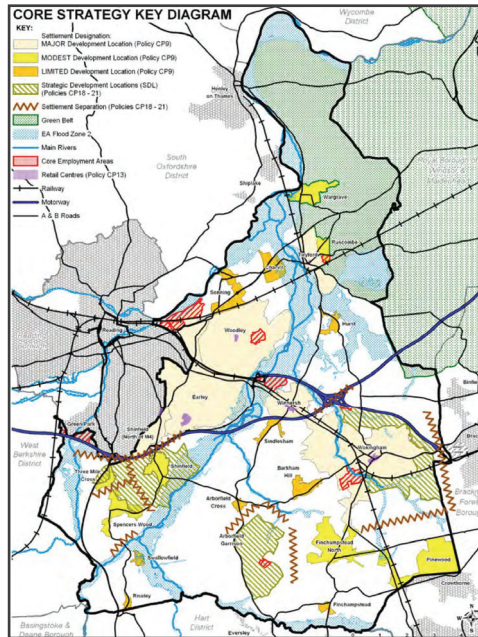
The Art of War was written by General Tzu, a Chinese warlord, around the 5th Century BC – it is not only still relevant to modern day warfare but has been used to shape commercial strategies. One of the key messages of this treatise is that it is not sufficient to have well devised plans but the plans should be disguised.

The Local Development Plan is an important document that demonstrates how Local Planning Authorities will build the number of dwellings required by Central Government and ensure development is spread across the area with the required infrastructure delivered in a timely and cost-effective fashion.

The current Core Plan for Wokingham Borough Council (WBC) covers the period 2010-2026 and concentrates new housing on four Strategic Development Locations (SDL). Work on the Local Plan Update (LPU) began in 2016 to reflect revised housing numbers and to cover the new planning horizon to 2037/38.

In February 2020, the LPU was published for public consultation and featured the development of a Garden Town at Grazeley. Soon after, it became apparent Grazeley could not be progressed as the Emergency Planning Zone around the Atomic Weapons Establishment at Burghfield was redesignated. A revised version of The LPU was published in Nov 2021 where the concept of Grazeley was replaced by a fifth SDL at Hall Farm in Arborfield.

At the time Barkham Parish Council (BPC) issued a statement that it deeply regretted any proposals that contravened the policies of the Joint Arborfield and Barkham Neighbourhood Plan but was relieved that these latest proposals would at least spread the loading of new homes across the Borough.



Core strategy key diagram

This needs to be put into context. Barkham is a relatively small semi-rural parish which at the time of the 2011 census had 1226 households. By 2037/38 when all the houses currently planned have been delivered, the number of dwellings will approach 3,440 – almost a threefold increase.

This is in Barkham alone as there are similar housing projects just over the parish boundaries which will further encroach on the remaining countryside, add to congestion on the road network and place further demands on local services. Then, in addition, there is the planned 130 acre solar farm!

There are now further delays to the LPU. The local elections in May 2022 resulted in a new political administration taking the lead in Wokingham. Some of the appointed councillors included in their manifesto opposition to some aspects of the LPU

and, in particular, Hall Farm. The response of the new administration has been to seek discussions with Central Government to reduce housing numbers and to review the work behind the current version of the LPU. BPC has to applaud any attempt to reduce the requirement for new houses in the area but is fearful of the resulting delay.

To appreciate BPC's fears, we need to understand the significance of the 5 Year Land Supply (5YLS) metric and what is happening elsewhere in the Borough.

The 5YLS is a measure of the ability to build the required number of homes over a future and rolling five-year period – in Wokingham this is currently not robust and is sitting just below the required 5 years. If a local authority cannot demonstrate a robust 5YLS then the 'presumption in favour of sustainable development' – Section 11 of the NPPF (National Planning Policy Framework) – applies. The office of the Secretary of State has confirmed to BPC that this does not mean that all applications will be approved if there is a shortfall in the 5YLS but it does mean that applications can only be denied if there is a material conflict with planning policies outlined in the NPPF. In other words, it is a question of degree and Barkham does not want to put this to test. Two planning applications elsewhere in the Borough may be relevant.

An application to build four homes in Hurst (PA211532) was initially refused by WBC but was granted on appeal because of the weak 5YLS even though the presiding Planning Inspector had concerns that the proposal would harm the character and appearance of the area.

Another application (PA203544) to build 54 dwellings in the Parish of Wokingham Town was initially refused by WBC and has just gone to appeal. The outcome of the appeal is awaited but in preparing for the appeal, the WBC Planning Committee instructed the officers not to contest the appeal on the grounds of impact on settlement separation or protected trees.

The reasons for this surprising direction are not known as it was discussed by the Planning Committee in camera but no doubt the failing 5YLS would not have been helpful.

There are two planning applications under consideration in or just outside Barkham to build 40 homes on land at Edneys Hill (PA223037) and 350 dwellings at Blagrove Meadows (PA222306). Both of these have received many objections from residents on grounds of: reduced settlement separation, traffic on Barkham Road, further strain on local services, impact on the character of the area and protected trees. We will have to wait to see if the circumstances surrounding the Hurst and Wokingham Town applications have any bearing.



PA223037 – Edneys Hill/Barkham Road



PA222306 – Blagrove Meadows

Over recent years, BPC has objected to many applications to build new homes ranging from 1 to 120 in number and led the 4,000 name petition against the development of Barkham Square. Many of these could come back if a general free-for-all to sidestep the LPU is signalled by the outcome of the above applications – it will not only be BPC and Barkham residents watching these outcomes with great interest.

So, what is WBC's real thinking about the future direction of the LPU? Will they hold out for a reduction in housing numbers, during which time many applications could be approved by the Inspectors in a piecemeal fashion. This would make a mockery of any point in developing the LPU. Will Hall Farm go ahead – if not, where will the housing go? If Hall Farm is not included in the

LPU, will this deter the owners – the University of Reading – from realising the value of this very significant asset? The Planning Inspectorate could inadvertently help make a lot of tough decisions on behalf of WBC.

The above summarises many themes that have been discussed in recent articles published in the BVRA Newsletter and BPC's Village Info Magazine put into the context of the development of the LPU. At the time of writing, BPC is arranging to meet with the WBC Executive Member for Planning and WBC Officers to try and understand the direction of the LPU and how they intend to manage the impact of this continuing delay. The outcome of these discussions will be reported in the next edition of Village Info with any intermediate updates added to the BPC website barkham-parishcouncil.org.uk/

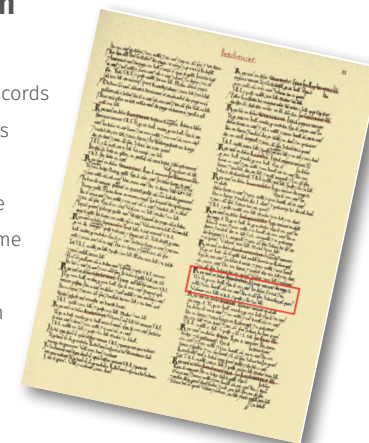
History of Barkham – The Domesday Book

Barkham is mentioned in the Domesday survey in 1086, when the manor was held directly by King William. Prior to the Conquest the manor was held by a Saxon then called Ælmer from Edward the Confessor.

The entry for Barkham (opposite) records that the amount of cultivated land was 3 hides (or ploughlands). A hide was the amount of land which could be ploughed in an agricultural year using one plough with an eight-ox team. The area varied with soil quality and terrain, and could be between 60 and 180 acres. It has been suggested that the local measure was about 120 acres, on which basis there would have been about 360 acres under cultivation in Barkham.

Domesday Book Entry for Barkham

Consistently, Domesday records three ploughs at Barkham. The demesne lands (or home farm) of the manor, which probably would have been leased



out at this time, were reported as accounting for one ploughland (say 120 acres of cultivated land). The annual tax revenue from the manor was £3, compared with £4 in the time of Edward the Confessor (1042– 1066).

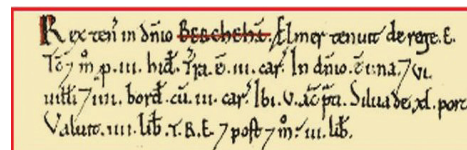
Mention should also be made of the grant, in a Saxon charter of 952, of an estate called Beorchamme (birch-tree meadow), which has been identified with Barkham (Bercheham in the Domesday survey), by King Eadred to his thegn Ælfwine. The grant was of an estate of 3 hides, consistent with the area of arable land in Barkham at the time of Domesday.

IN CERLEDONE HD.

Rex teñ in dñio Berchehã. Ælmer tenuit de rege E. Tc 7 m p iiii hid. Tr a ê iiii cãr. In dñio c una 7 vi uilli 7 iiii bord cù iiii cãr. Ibi v ãc pti. Silua de XL porc. Valuit iiii lib T.R.E. 7 m: iiii lib.

IN THE HUNDRED OF CHARLTON

The King holds Barkham in demesne. Ælmer held it of King Edward (the Confessor). Then, as now, it was rated for three hides (c. 360 acres). The land is three ploughlands. In demesne there is one ploughland. There are six villeins, four bordars with three ploughs. There are five acres of pasture. Wood for the pasturage of forty hogs. It was worth £4 in the time of King Edward [1042–1066], afterwards, and now £3.



Domesday Book entry for Barkham

Much of this article is extracted from *Barkham - A History*, by David French and Janet Firth, 163pp, ISBN 0-9537960-0-0, available from Henry Street Garden Centre and other retailers as well as direct from Barkham Parish Council.

Enjoy a day out...or a trip to the shops...

If you are over 70 or disabled become a member and begin to enjoy the following services

Dial a Ride (DAR). This is where members can telephone to book a journey **anywhere** they require at a time to suit them.

Shopping Days. This is a regular service to a specified town with sufficient time to shop or meet friends, etc.

Day Excursions. These are trips to places of interest as published in our monthly programme.

Contract work. This is done for other voluntary organisations such as Stroke Clubs, Arthritis Care, Polio Fellowship, Berkshire Blind, Alzheimer's Association, Schools, Social Services and the local Heath Authority.



OUR charity begins at YOUR home



Telephone 0345 544 0850 for further information

Keep Mobile Community Transport CIO is a charity registered with the Charity Commission Number 1174433 Member of the Community Transport Association. Registered MiDAS Trainers

School Road Closure

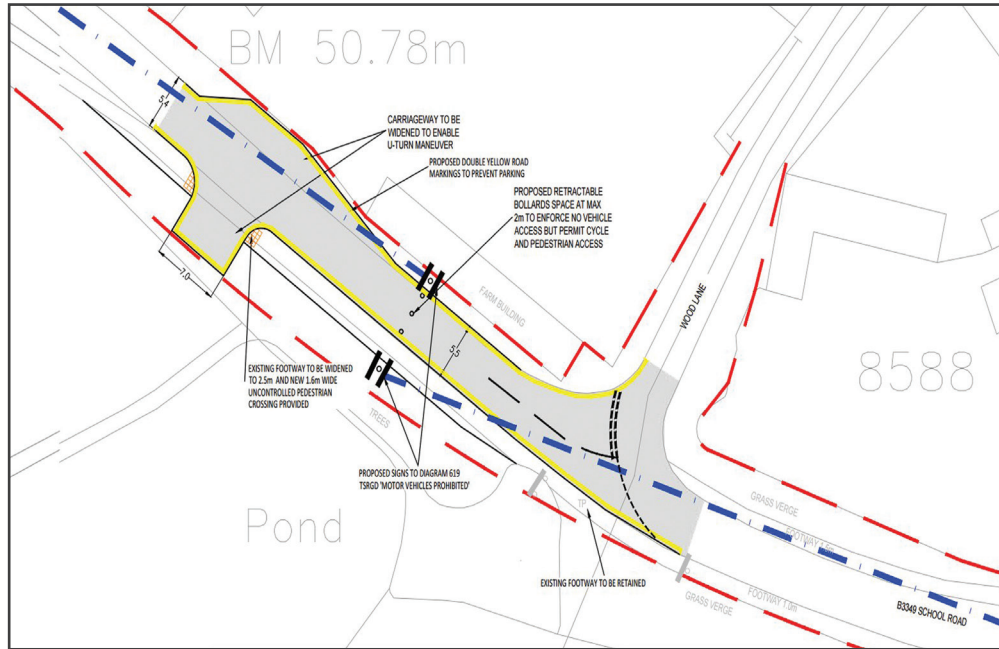


Diagram showing the closure of School Road

By now, most residents will be aware that School Road has closed to through traffic, as part of the Arborfield village improvements scheme, which is a planning condition set as part of the Observer Way planning application.

The Closure came into effect at 4pm on September 16th 2022 under an Experimental Traffic Regulation Order (ETRO), and will remain closed for the duration of the ETRO process. After this time WBC will decide whether to keep the closure of School Road or if it should re-open.

Any comments on the ETRO should be submitted to Wokingham Borough Council within 6 months of the ETRO coming into effect via the dedicated email address: TM.Consultations@wokingham.gov.uk quoting ref: 2022/E06/001 or by post to the

Traffic Management, Parking & Road Safety Team, Shute End, Wokingham, Berkshire, RG40 1WL.

WBC will log all feedback and include it in the School Road ETRO report which will be written once they have collected enough data.

As the scheme is under an ETRO comments will be collated and the scheme reviewed after 6 months to see if any changes need to be made. This ETRO can be extended up to 18 months if required.

To enable Barkham Parish Council to gauge residents' views on the closure and to help the councillors prepare their response, we would appreciate being copied in to any responses sent to WBC. Please copy the parish council in via the Clerks email address or post a copy of your response to the Parish Council office.

Wokingham Wellbeing Service

Low mood? Feelings of anxiety? Perhaps you're struggling to sleep, dealing with multiple responsibilities, or feeling overwhelmed and unsure where to start?

Mind in Berkshire Wellbeing Workers can offer free one-to-one appointments for people aged 18 and over in Wokingham. These sessions enable people to put practical things in place that can help them feel more able to manage everyday stress and wellbeing challenges. Wellbeing Workers can:

- Give you time, space and support to listen to your concerns and help you identify what is important to you.
- Tell you about relevant services, resources and tools you can access to improve your wellbeing.
- Support you to identify goals and encourage you to work towards them.

We can offer telephone, video or face-to-face (in some GP practices) sessions – depending on what works for you, just get in touch via one of the options below!

Your GP practice or another professional who is supporting you can also make a referral on your behalf.

CONTACT

Website:
Complete an online referral form here:
services.thejoyapp.com/en/listings/489

Telephone:
01865 24 77 88

Email:
WokinghamWellbeing@oxfordshiremind.org.uk

BARKHAM VILLAGE HALL CHARITY

REQUIRES A NEW CHAIRPERSON

If you are community minded and enjoy dealing with people please apply. We hold bimonthly meetings and the position would require approximately 3 hours a week of general supervision of projects and other affairs.

Contact: Derek Oxbrough

doxbrough@hotmail.com
Tel: 01189 760578

"Daft place to put a bollard."

We don't judge, we just fix it.



- Bumper Scuffs
- Dents
- Paintless Dent Removal
- Alloy Wheel Refurbishment
- Key Scratches
- Accident Damage
- Headlight Restoration
- Signwriting Removal
- Supagard Paint Protection

ALL OUR REPAIRS ARE:
• Completed Same Day
• Professional Quality
• Convenient
• Cost Effective
• Mobile

ChipsAway

LIKE IT NEVER HAPPENED

CHRIS & LACEY ASHDOWN

Call us today on 07496 375043 for a FREE estimate on repairs to bumper scuffs, paint scratches, minor dents and alloy wheels. Find out more at chipsawaywokingham.co.uk or email chris.ashdown@chipsaway.co.uk

COMMUNITY NAVIGATION

A free confidential telephone and online support service for Wokingham Borough residents, helping you find social support & activities in your community.

Thank you for giving me the confidence to attend exercise classes...

I feel so much better after chatting with you guys!

Wow, this service is awesome!

Thank you for your time and for the great courtesy you have shown our family...



Funded by and working in partnership with



involve is a registered charity: 1061373 & company limited by guarantee: 3332555



What matters to me...?



Community Navigator



With our Community Navigator's local knowledge, you can use this service to help improve the health, wellbeing and confidence of you and your loved ones.

To find out more, you can contact us by filling out our easy online form at:

involve.community/referral

Or speak to a member of our team on:

01344 304 404

Barkham Parochial Charities

Charity number: 236959

Barkham Parochial Charities date back to 1698 when John Broadbanck gave *“eight shillings yearly to this Parish for ever”*.

Today this is brought together with six other charitable funds for the poor and used to make one-off cash grants to individuals or groups.

On the outside Barkham appears to be affluent and at the same time there are individuals that would benefit from a small grant when they fall upon hard times. The charities are small in today’s terms but are focussed on local needs and so have always been able to respond to requests for assistance.

There is a small amount of money available each year so if you know of any cases of hardship in the Parish of Barkham or in the adjoining Parishes then please make contact with the trustees in total confidence.

Contact:
Malcolm Clark
Trustee and Correspondent
0118 979 0070

An update from Barkham Ward Councillor - John Kaiser



Cut Costs Not services

You need experience to run our borough council during these extraordinary times. The current coalition led by the Liberal

Democrats, come to it with no track record and have not been in control of the council for over 20 years. When they were last in power it took them two short years to take the council to the edge of bankruptcy.

Costing all the items they have on their want list, could very much turn Wokingham, in a very short time into a failing council like Slough. This includes an unrealistic agenda which is designed to drive motorists off the road and we already seeing this with the congestion around the borough and their plans to give priority to cycling and walking at the expense of the hard pushed and highly taxed motorists.

They ignore the facts we have one of the highest level of car ownership in the UK and much as we would like to see more action which reduces congestion for many, the car is indispensable for all kinds of reasons, not least the bus companies controlled by Reading Borough council serving Wokingham are looking to reduce services to stem their losses. Even more than that, services protected by the previous administrations for 20 years when they were in power such as weekly bin collections look like they are going to be scrapped and this coupled with the plans to increase car parking fees over 100% which it seems is planned to

include weekends and evening which are currently free, this will destroy our town centres and will devastate businesses,

All this is in the plans for the new Liberal Democrats run coalition administration, all of which will be a receipt for disaster for residents.

Keeping the councils’ finances sound should not fall on the residents of the borough with the cost of the energy and interests’ rates already making it difficult for all to make ends meet, something the current coalition controlling the council do not seem to understand or care about.



When I was responsible for finance at the council the plan was CUT COSTS NOT SERVICES which we have a history, saving £30m over the last 6 years.

Councillor John Kaiser

Councillor for Barkham, Wokingham Borough Council

Email: john.kaiser@wokingham.gov.uk

Telephone: 07714192352

Any views or opinions expressed in this article are solely those of the author and do not necessarily represent those of Barkham Parish Council.

Know someone spending Christmas Day alone this year?



We are now accepting referrals for our Christmas Day event, bringing joy and companionship to those who would otherwise be spending Christmas on their own

At The Link Visiting Scheme, we understand how difficult and painful the Christmas period can be for those on their own. So, for the 11th year running, we're planning to bring festive cheer to those who are alone and who would love some extra company. This will include a friend to talk to, gifts and a delicious, traditional Christmas dinner at a local venue.

For more information, visit linkvisiting.org/christmas or call our office: 0118 9798019



Giving the gift of friendship this Christmas

About us

The Link Visiting Scheme is an award-winning charity dedicated to reducing loneliness in Wokingham Borough. For over 20 years, we've brought vital, life-enhancing social connections to older people through regular visits and local community activities. With the support of over 400 wonderful volunteers, we currently help around 500 people feel valued and connected.

Christmas 2022

For many, Christmas Day is a day for family, for getting together and celebrating with loved ones. Sadly, however, for some people without family or close friends, it is the loneliest day of the year.

A time when isolation, loss and grief are even more keenly felt. For the 11th year running, we're planning to bring festive cheer to those who are alone and who would love some extra company. This includes having a friend to talk to, a delicious meal on the day plus a gift of treats. If you are on your own, please get in touch with us and we can see if we can help. We rely on donations to support those in our community who need us most. Could you help?

For more information visit our website:

www.linkvisiting.org/christmas

or call our office:

0118 9798019

citizens
advice

Wokingham

**Can you help our goal to
recruit and train 30 new
Volunteers?**

**Become a Volunteer
Trainee Adviser**

**and help people find a
way forward with their
problems**





**WOKINGHAM
UNITED CHARITIES**

Essential Item Grants

Has your washing machine broken?

Is your cooker on its last legs?

Can't afford to replace it?

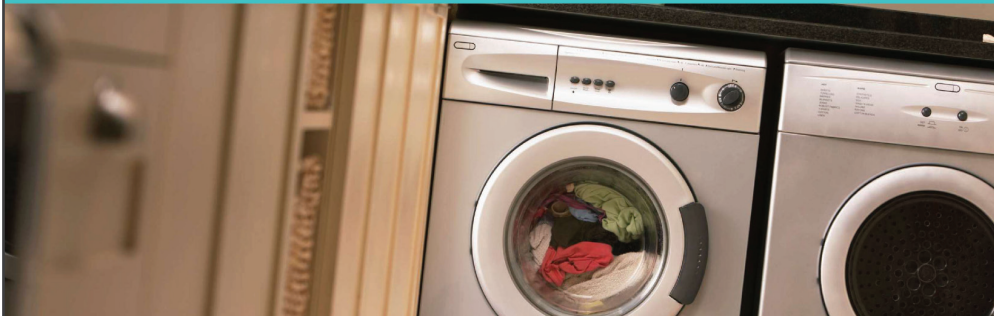
Do you need help with paying debt-related fees?

Wokingham United Charities may be able to help...

We have partnered with Citizens Advice Wokingham to provide our essential item grants. Citizens Advice offer free independent, impartial advice and support to people in need*.

We realise sometimes everyone needs a helping hand. By partnering with Citizens Advice Wokingham we can provide holistic support to help you when you need it most. Citizens Advice Wokingham can signpost you to relevant support agencies and if eligible, can apply on your behalf for an essential item grant.

We may also be able to help with transport costs, school trips, counselling and other essential items or services.



To find out how we can help, please call Citizens Advice Wokingham. Citizens Advice Wokingham will discuss your circumstances to find the best way you can be supported and if applicable, submit the Essential Item Grant Application.

Citizens Advice Wokingham

0808 278 7958

www.citizensadvicewokingham.org.uk

*Grants are subject to eligibility criteria and can be applied for once per calendar year for up to £500. Please contact us for further information.

Citizens Advice Wokingham can help with issues around welfare benefits, debt, housing, employment law and much more.

About Wokingham United Charities...

Wokingham United Charities is a registered charity (number 1107171) and helps local people in poverty, hardship or distress by providing charitable grants and running semi-sheltered Almshouses. We are an amalgamation of 21 local charities and have supported people in need in Wokingham since 1451.

 @unitedwokingham

 @wokingham_united_charities

 @wokinghamunitedcharitiesonline



Westende, London Road, Wokingham, Berkshire, RG40 1YA
0118 403 2980
grants@wokinghamunitedcharities.org.uk

WBC Arborfield Green Development Update

District centre plans updated before submission

Following Crest Nicholson's exhibition of plans for a district centre at Arborfield Green in April (pictured), we've had further talks with the developer and they've made a few improvements.

The scheme still includes a supermarket and smaller shops, a square, community centre, pub and green space with paths and allotments, but the proposed layout and access have changed slightly including new pedestrianised areas.

We understand Crest will offer residents a chance to comment before it submits a planning application to us. The development is acceptable in principle as part of an outline consent we gave for housing in this area, with the finer details to be agreed.

Crest is required to provide this as a condition of its planning permission, as well as restoring the former infirmary stables on the site and opening this historic monument up for community use.

Pitches and other amenities also taking shape

The developer will also provide, through a separate application, a new pavilion at Arborfield Green cricket ground to replace the outdated one plus new cricket and football pitches, allotments, a multi-use games area and two play areas.

This project has been held up by the coronavirus pandemic, which caused financial uncertainty among prospective tenants at the district centre. We know you've been waiting a long time so we're doing everything we can to push it forward.

To ask about leasing a shop unit, email: community@arborfieldgreen.co.uk. Additionally, a tenant could soon be confirmed for the former Crest Nicholson sales unit off Biggs Lane and we'll keep you updated on this.

Biggs Lane toucan crossing

We're pleased to confirm that the new permanent crossing on Biggs Lane, which Crest Nicholson will be providing, will be a "toucan" crossing allowing cyclists to cross separately alongside pedestrians.

This will make it easier for residents to travel actively, including pupils attending the nearby Farley Hill Primary School, which is a key priority for us across the borough as we strive to combat air pollution and the climate emergency.

The crossing should be ready before Christmas, which we know is later than some of you had hoped but we assure you the current temporary crossing, which Crest is also providing, is just as safe until then.

Major new road still on the horizon

We're close to opening the final section of Nine Mile Ride Extension between Bohunt School and the new roundabout off Park Lane, which will create a new access route from west to east across the Arborfield development.

It's taken longer than expected for a variety of reasons, including supply chain issues earlier this summer which delayed the installation of crossings, but we recently passed a significant milestone and thank you for bearing with us.

Delivering on the promise that all people matter



Promise Inclusion or Pinc is a user led and local, independent registered charity that works with children and adults with learning disabilities and/or autism, their parents, carers and families.

Our vision is to ensure that for those living with a learning or associated disability, every opportunity is maximised, providing support, fun and care for individuals, their families and dependants.

Our Family Liaison Team can offer practical, financial and emotional support to carers on a one to one basis via phone, email, Zoom or home visit. We also offer respite activities for carers and information workshops.

Contact

Tracey: 07423 686965 (Wokingham transition and adults)

Shamin: 07827 340408 (Wokingham transition and adults)

Michele: 07827340409 (Wokingham Children)

Our Social Groups and Activities for young people and adults with learning disabilities and autism, and for their siblings enable them to make friends, learn social skills, grow in confidence and most importantly have fun with their peers!

**Smiles for Sibs
Youth Club@ Addington
@ The Acorn
Paul's Karaoke
Gateway**

Contact us

Tel: 0300 777 8539 or 07827 340405

E: admin@promiseinclusion.org

W: www.promiseinclusion.org

Which?
Trusted trader

C.A.E. AUTOS
0118 977 1188

FREE COLLECTION AND DELIVERY from home or work*

Family Run Local Garage
Honest and Reliable
ALL types of repair work
ALL makes and models
FREE Bulb/Wiper Fitting
Servicing, MOT work, etc

CAE Ltd
Wokingham

CALL 24/7 on 0118 977 1188 or 07956169265

www.cae-wokingham.co.uk

*within local area

@caeaautos
@caewokingham

Village INFO

www.barkham-parishcouncil.org.uk has a host of information about police, doctors contacts, etc under local information and directory. A few of the contacts are reproduced here. Let Ellen Tims (Parish Clerk) know if you would like a local organisation, club etc, to be highlighted here in a future issue.

Barkham Parochial Charities
providing help to those in need -
Malcolm Clark via Parish Clerk

Barkham Pre School
www.barkhampreschool.net

Barkham St James Church
www.achurchnearyou.com

BVRA residents' association
www.barkham.org.uk

Barkham Village Store
01189 799131.
barkhamvillagestore@hotmail.co.uk

1st Wokingham Beaver, Cub and Scout Group
www.firstwokingham.org.uk

The Bull at Barkham
www.thebullbarkham.com

The Coombes CE Primary School.
www.thecoombes.com

Wokingham Job Support Centre
www.wjsc.org.uk

Wokingham Citizens Advice Bureau
www.citizensadvicewokingham.org.uk

Wokingham Cancer Care Trust
www.wdcct.org

Shine WBC activities for the over 50s
www.wokingham.gov.uk

Reach Wokingham
www.reachwokingham.com

Farley Hill Primary School
www.farleyhillprimary.co.uk

Barkham Parish Council

Become a Councillor

Barkham Parish Council is the closest tier of government to our community, and we have the responsibility of making decisions on behalf of the people of the Parish.

Often the first point of call for resident's queries and concerns, the Parish Council takes our duty to serve the people of Barkham seriously and we want to see our village flourish. Therefore, we encourage people to come forward to let us know what they want from us and suggest ways that we could do things better.

What matters to you matters to us, so whether that is about local planning issues, more recreational facilities for young people, better services for older people or traffic calming measures, we want you to tell us about it.

If you would like to join us as a councillor read on to find out more...

What it means to be a Parish Councillor

Parish Councillors have a real opportunity to make a positive and lasting difference in the lives of the people in their community. Whilst we work with Wokingham Borough Council, our unique position at the heart of the community means that we are better placed to understand the needs of residents and do something about it. After all councillors are just people that live in the village like you, with a passion to see Barkham thrive.

It's so important that we represent the interests of the whole community and getting to grips with the village's diverse groups is key to being a councillor. While we want councillors that can bring their own strengths

and ideas to the table, it is also about how they engage with their electors to ensure that every voice gets heard.

Forget any stereotypes you may hold about the sort of person that stands to be a councillor, we celebrate our diversity and make better decisions because of it. You don't need any special skills to be a councillor however having or being able to develop the following skills, knowledge and attributes will help you in the role:

- **Communication Skills**
- **Problem Solving**
- **Team working**
- **Organisational skills**
- **Ability to engage your local community**

We meet on the second Tuesday of the month at the Arborfield Green Community Centre from 7.30pm. Why not come along to see the Council in action. Our councillors are always happy to answer any questions and tell you what their experience of being a councillor is.



To find out more about joining Barkham Parish Council contact the Clerk on **0118 976 2089**, email clerk@barkham-parishcouncil.org.uk or call in at our office in the **Community Centre**, open between **09.30 to 14:00 Monday to Thursday** (except bank holidays).



THE BEST FOR...



A1 Car Spares

We have invested in the very latest second hand car processing capabilities. Not only do we de-pollute end-of-life-vehicles (ELVs), but we also offer you second hand car spares at amazing prices. If you are looking for second hand car spares that are rare, there is a good chance that we have them!



A1 Loo Hire

We not only provide facility hire but offer an unrivalled waste disposal service which has catered for many of the UK's major outdoor events. The A1 group has delivered total waste management solutions for over 15 years and has developed A1 Loo Hire to meet significant growth in line with increasing client requirements.



A1 Wet Waste

Wokingham Wet Waste is one of the countries leading Waste Management companies in the UK, embracing new technology and the very latest equipment available in order to deliver real added value to our clients.



A1 Metal Recycling

Investment in the very latest processing capabilities has seen Wokingham Metal Recycling acquire two SEDA Fixed Station De-pollution rigs. Top prices paid for your scrap metal, scrap cars and MoT failures. We also supply high quality scrap metal at great prices.

Contact us for more information or visit Highland Avenue, Wokingham

Tel: 0118 978 5143 www.a1groupuk.com

